



# A L U **F R A M E**

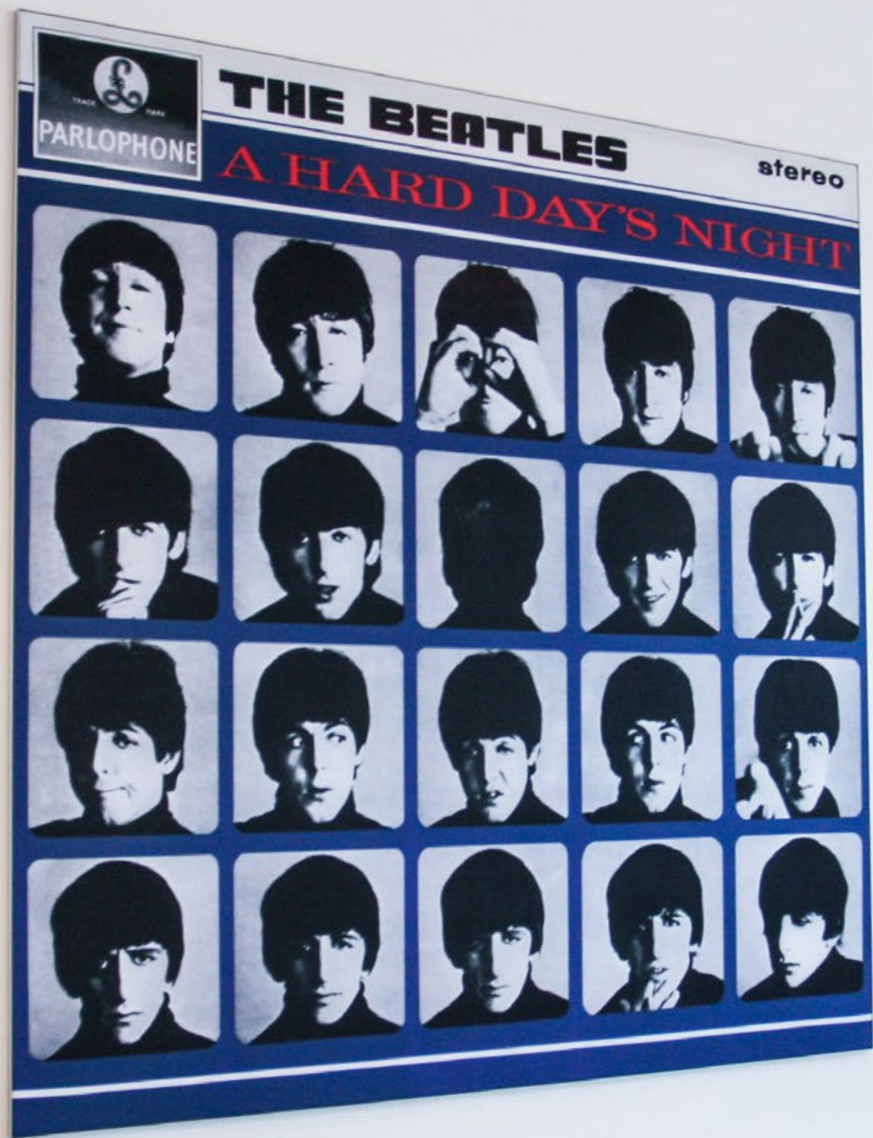
HIGH PERFORMANCE DISPLAY SYSTEMS

Lux**Visual**

INNOVATIVE PRINTING

DYE-SUBLIMATION  
PRINTING







<b>TEXTILE FRAMES</b>	<b>6</b>
SINGLE-SIDED	8
DOUBLE-SIDED	12
 <b>LED FRAMES</b>	 <b>18</b>
LED TECHNIQUES	20
SINGLE-SIDED	28
DOUBLE-SIDED	30
 <b>ACCESSORIES</b>	 <b>34</b>



# THE ADVANTAGES OF **ALUMINIUM FRAMES**



## **ANY SIZE POSSIBLE**

Every frame is made to measure



## **CHANGEABLE PRINTS**

Change the textile print easily  
and create a new look and feel



## **COMPACT PACKED**

Frames are packed compactly so worldwide  
transportation is easy



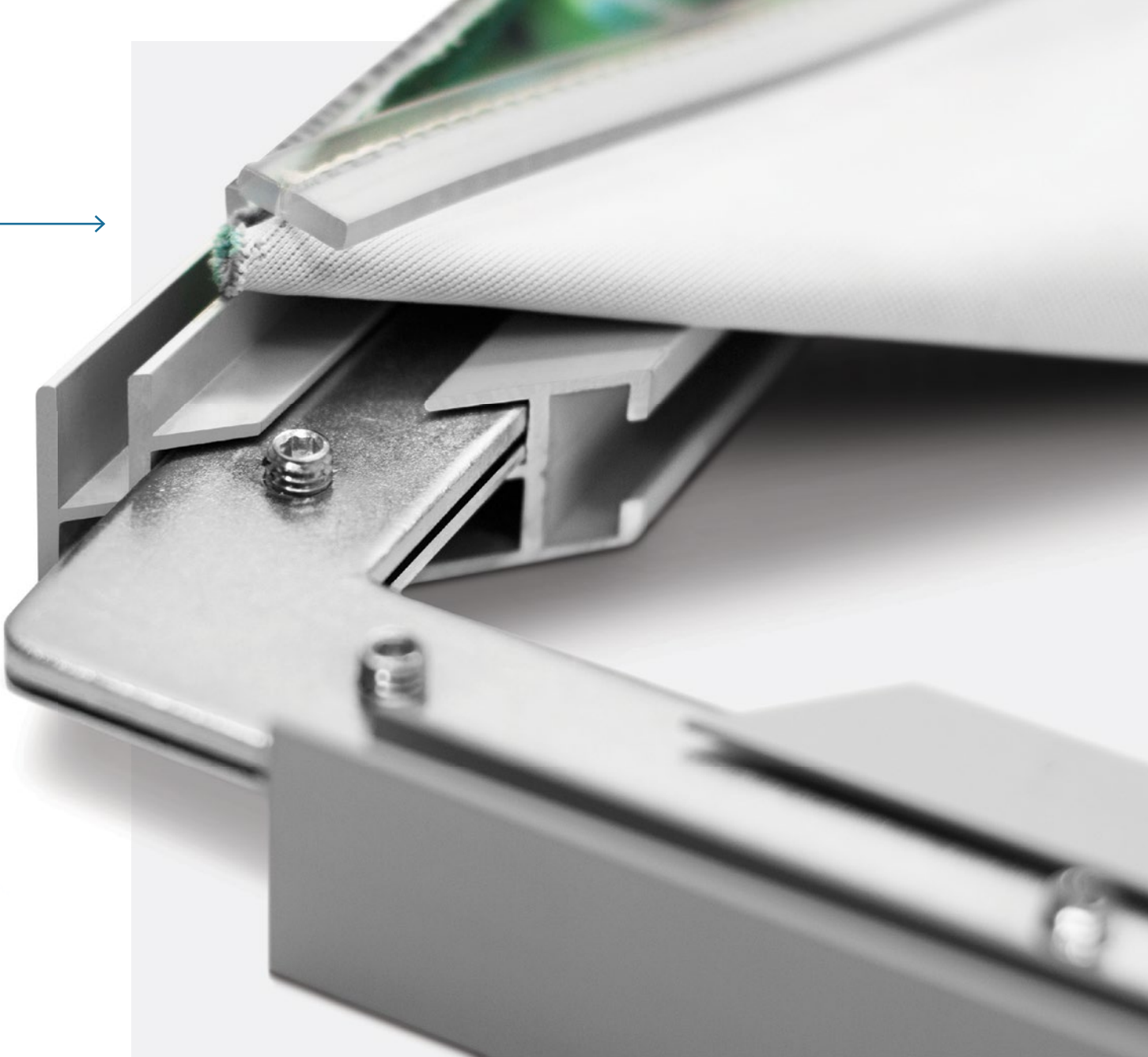
## **ALUMINUM IS 100% SUSTAINABLE**

Frames can be used several times and are  
100% sustainable

**TEXTILE PRINT WITH SILICONE EDGE**



**MODULAR CONSTRUCTION**









# TEXTILE FRAMES



We have a wide range of aluminum textile frames that allow you to switch textile prints quickly and easily. An aluminum textile frame ensures a high attention and is durable. The frame could be mounted on a wall or ceiling, but it could also be used as a freestanding frame using our baseplates.

## SINGLE-SIDED



**AF 15**  
Optional: Punchholes



**AF 19**  
Optional: Punchholes



**AF 27**  
Wall or Ceiling mount

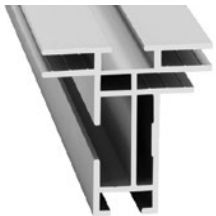


**AF CABINET 30**  
for built-in frames

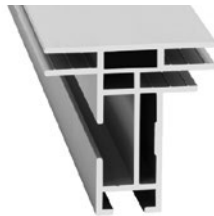


**AF DECO 45**  
Unique colors

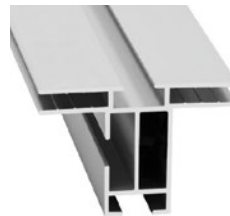
## DOUBLE-SIDED



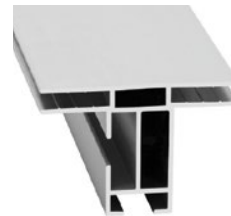
**AF D49 OPEN**  
For block-out layer



**AF D49 CLOSED**  
For block-out layer



**AF D50 OPEN**



**AF D50 CLOSED**



**AF D80 OPEN**



**AF D80 CLOSED**



**AF D100 CLOSED**

# TEXTILE FRAMES

## SINGLE-SIDED

## MOUNTING OPTIONS

Thanks to the modular construction, it is easy and quick to assemble the textile frame. Connect the corners and place the desired print in the frame. Due to a modular construction the frame is compactly packed and shipped easily.

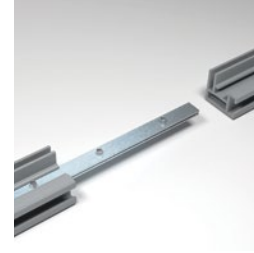






### 1. CONNECT THE CORNERS

Put the two different locksets together. Install the locksets in the appropriate groove and attach the miter cut lengths together.



### EXTEND THE FRAME - *OPTIONAL*

Lengths above 4000mm are divided and delivered in two or several parts. They could be easily connected with the corresponding extension set.



### 2. PLACE THE FRAME

Attach the frame by drilling into the wall or install wall mounts. Let the wall mount support the frame. Suspension from the ceiling is also an option.



### STRENGTHEN FRAME - *OPTIONAL*

To ensure stability of large sizes aluminum frames, stabilizers are mounted inside the frame to act like internal support beams.



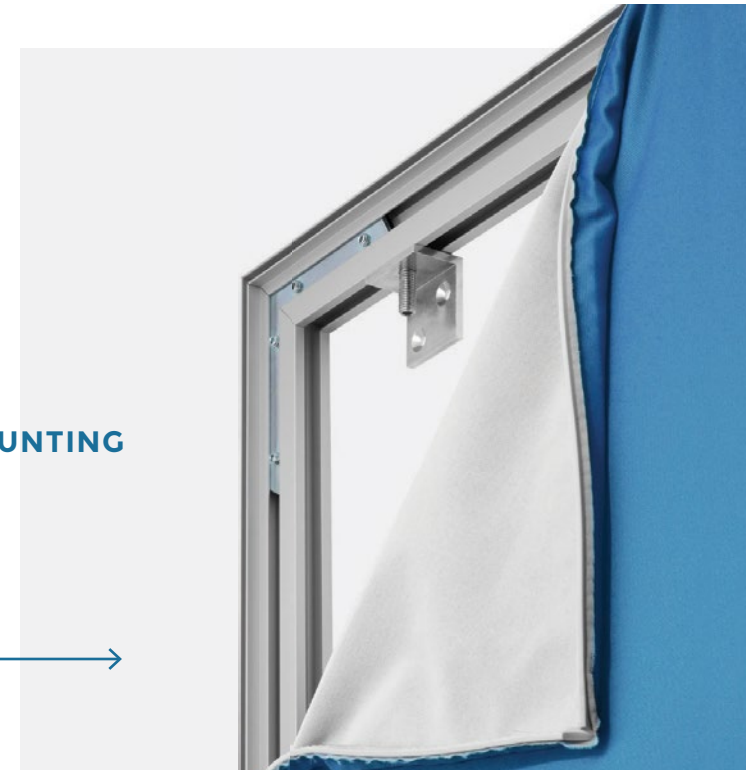
### 3. ATTACH THE TEXTILE PRINT

First attach the silicone edge in the corners of the groove. Then press the print into the rest of the groove from the middle.

# 4

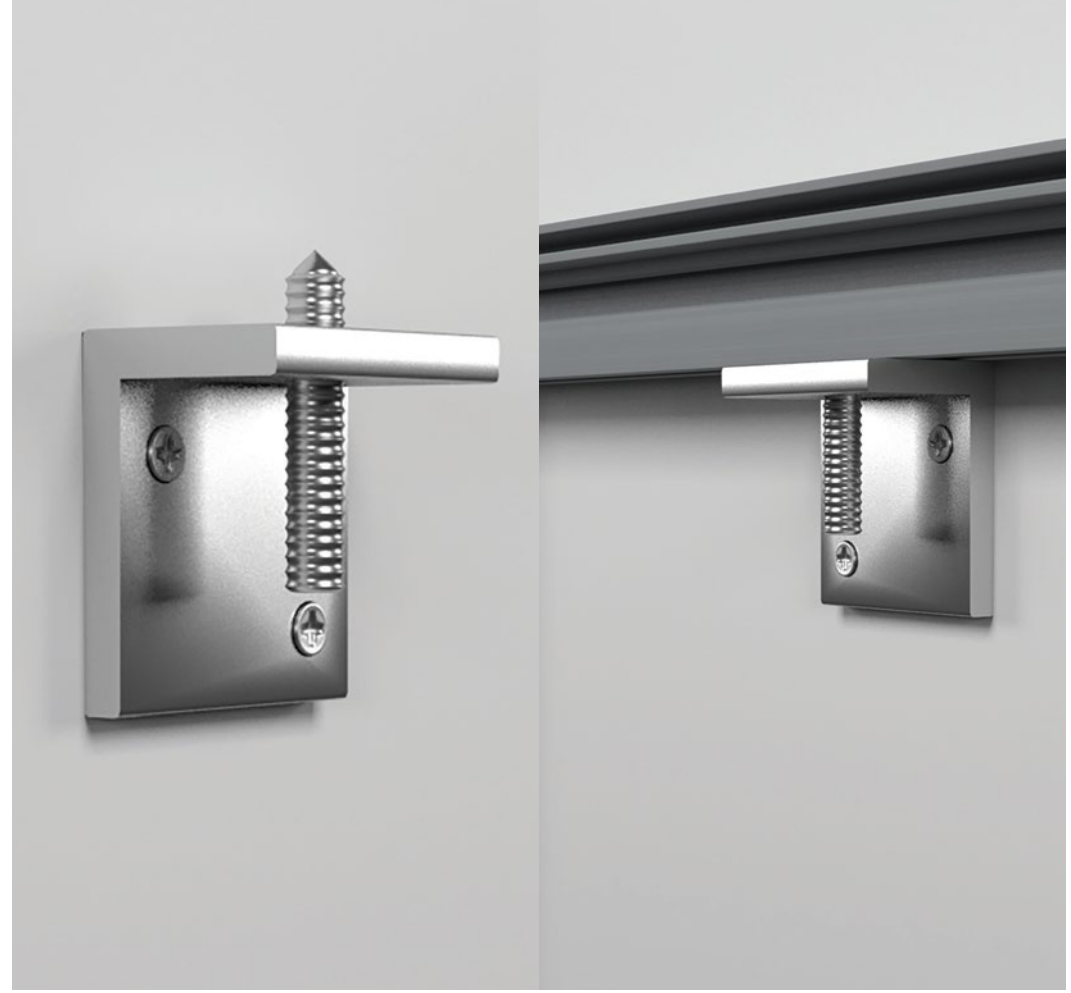
### OPTIONS FOR MOUNTING

Wall mounting  
Hanging  
Built-in frame





1 BY DRILLING



2 BY USING  
WALL MOUNTS

TEXTILE FRAMES / SINGLE-SIDED / **4 MOUNTING OPTIONS**



### 3 HANGING BY USING A CEILING MOUNT



### 4 BUILT-IN TEXTILE FRAME



# TEXTILE FRAMES

## DOUBLE-SIDED

## MOUNTING OPTIONS

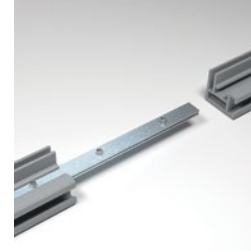
The double-sided textile frame could be used as freestanding or hanging frame. Create eye-catching displays in stores and showrooms or attractive room dividers that are perfect in any office. Make unique banners for exhibitions or other events.





### 1. CONNECT THE CORNERS

Put the two different locksets together. Install the locksets in the appropriate groove and attach the miter cut lengths together.



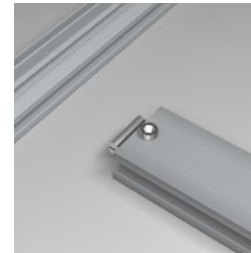
### EXTEND THE FRAME - *OPTIONAL*

Lengths above 4000mm are divided and delivered in two or several parts. They could be easily connected with the corresponding extension set.



### 2. PLACE THE PRINT

First attach the silicone strip of the print to the corners, then press the print into the rest of the groove.



### STRENGTHEN FRAME - *OPTIONAL*

To ensure stability of large sizes aluminum frames, stabilizers are mounted inside the frame to act like internal support beams.



### 3. ATTACH THE FRAME

Place the frame freestanding or hanging with the appropriate installation options.



### BLOCKOUT FABRIC - *OPTIONAL*

The blackout fabric blocks the lights, so both textile prints are visible.

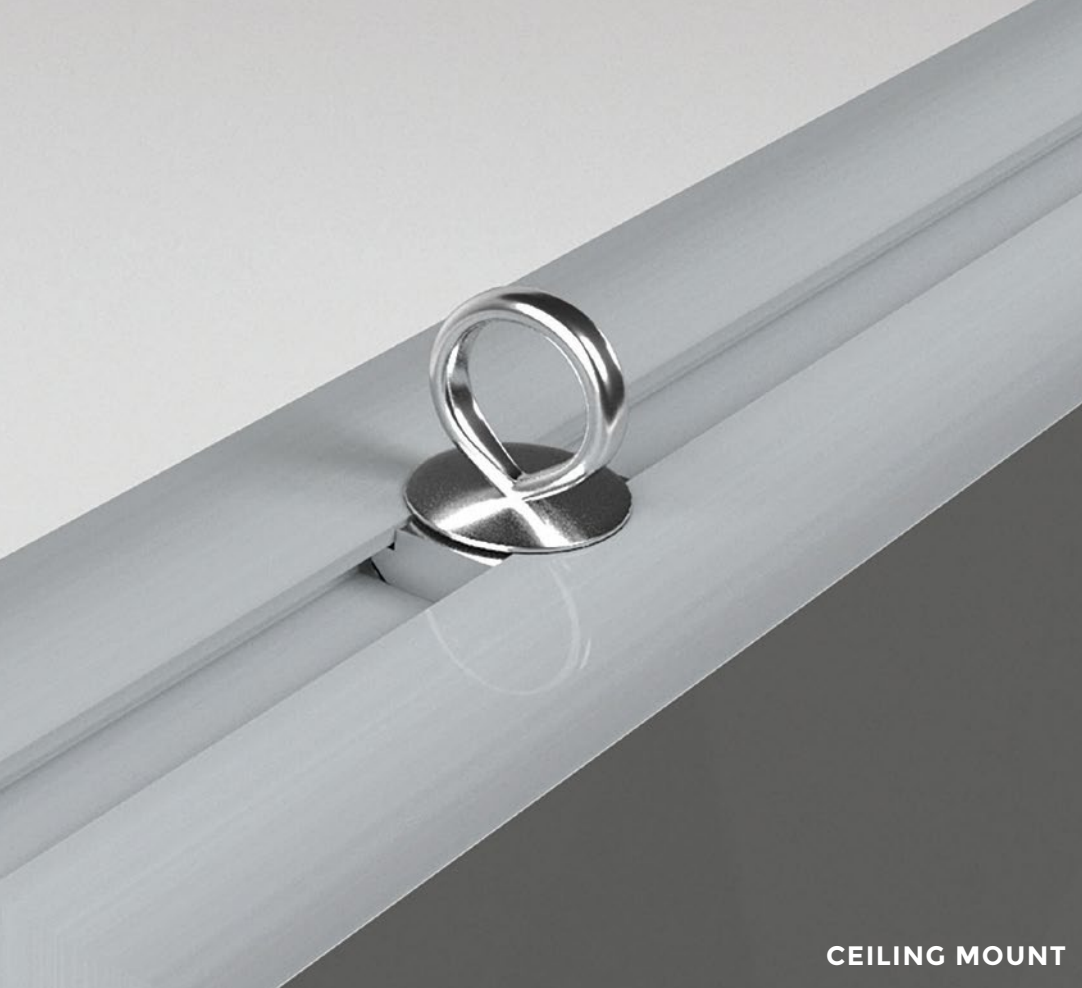
## 2

### OPTIONS FOR MOUNTING

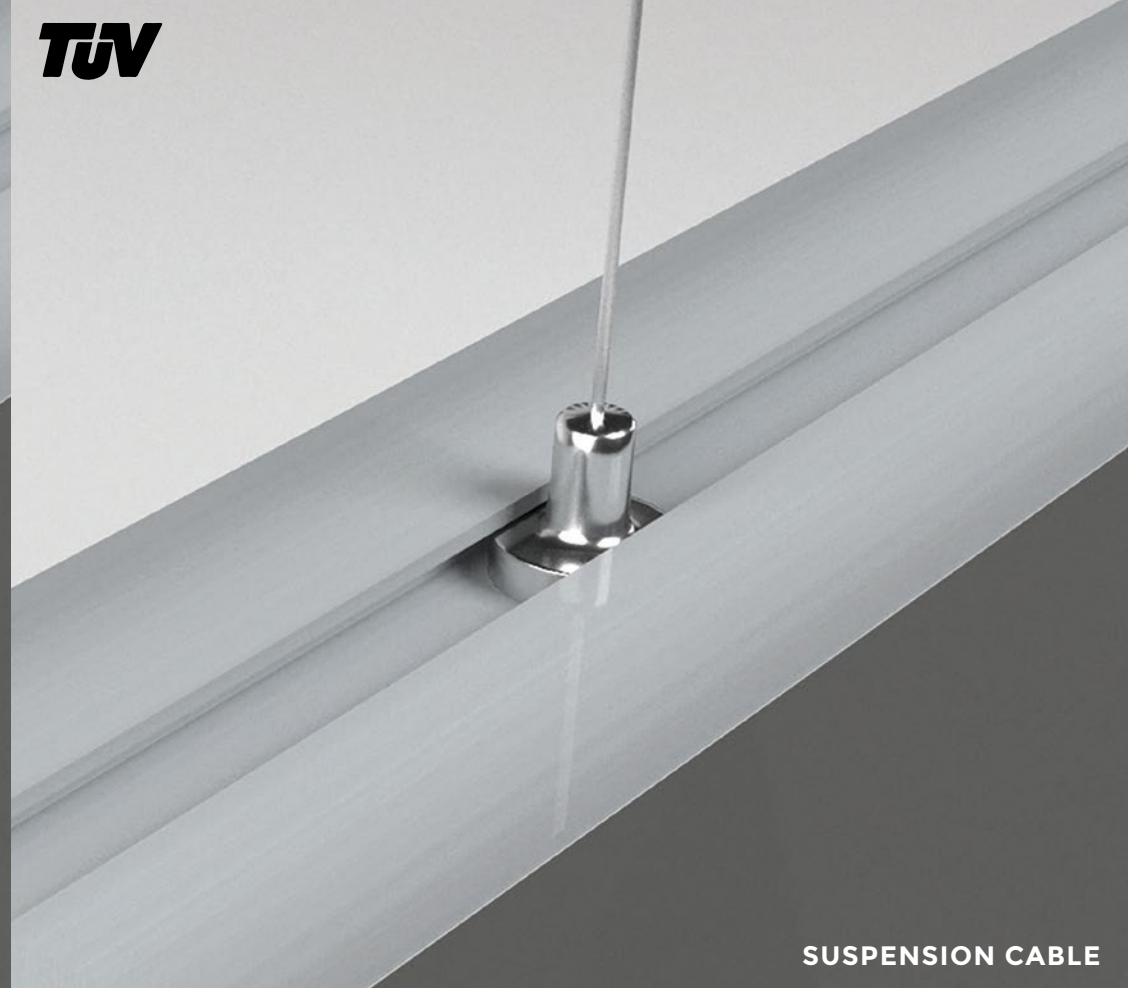
Hanging

Freestanding





CEILING MOUNT

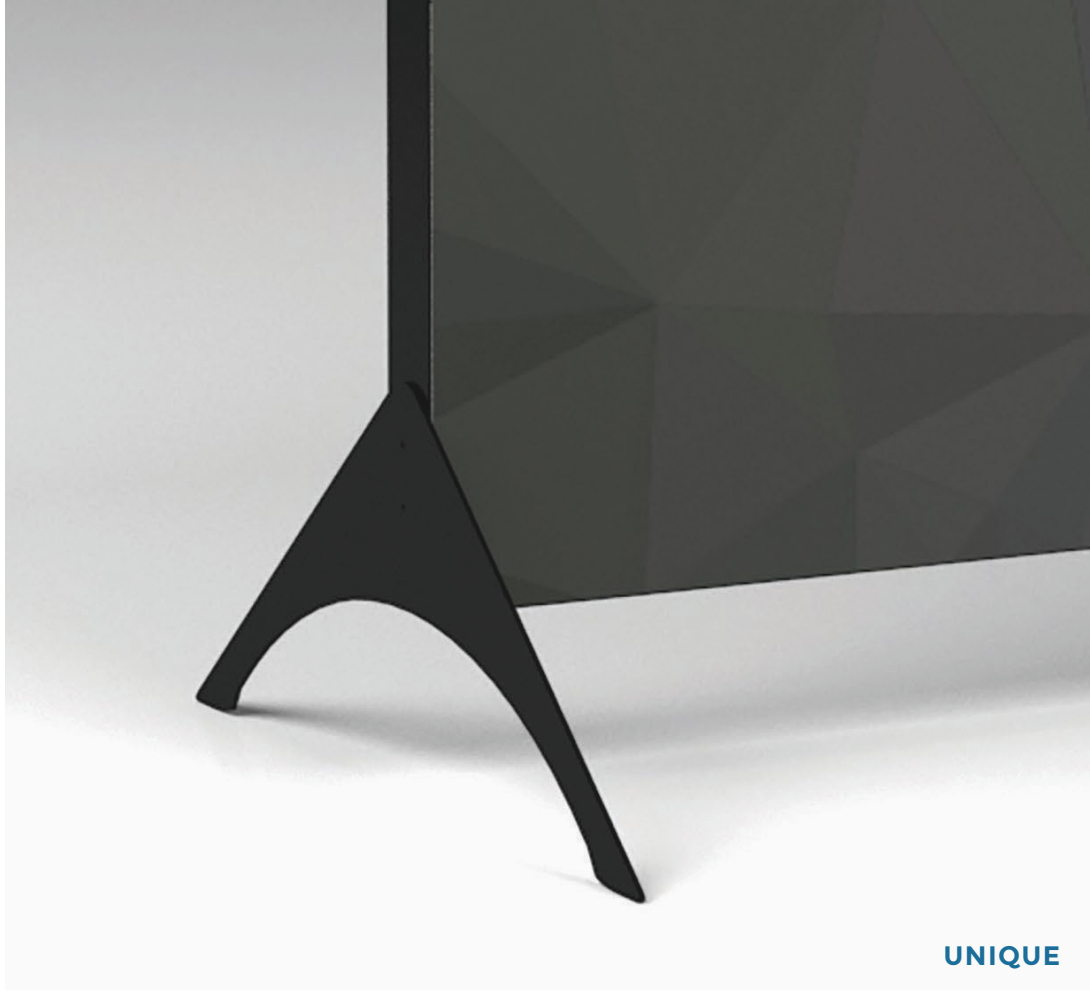


SUSPENSION CABLE

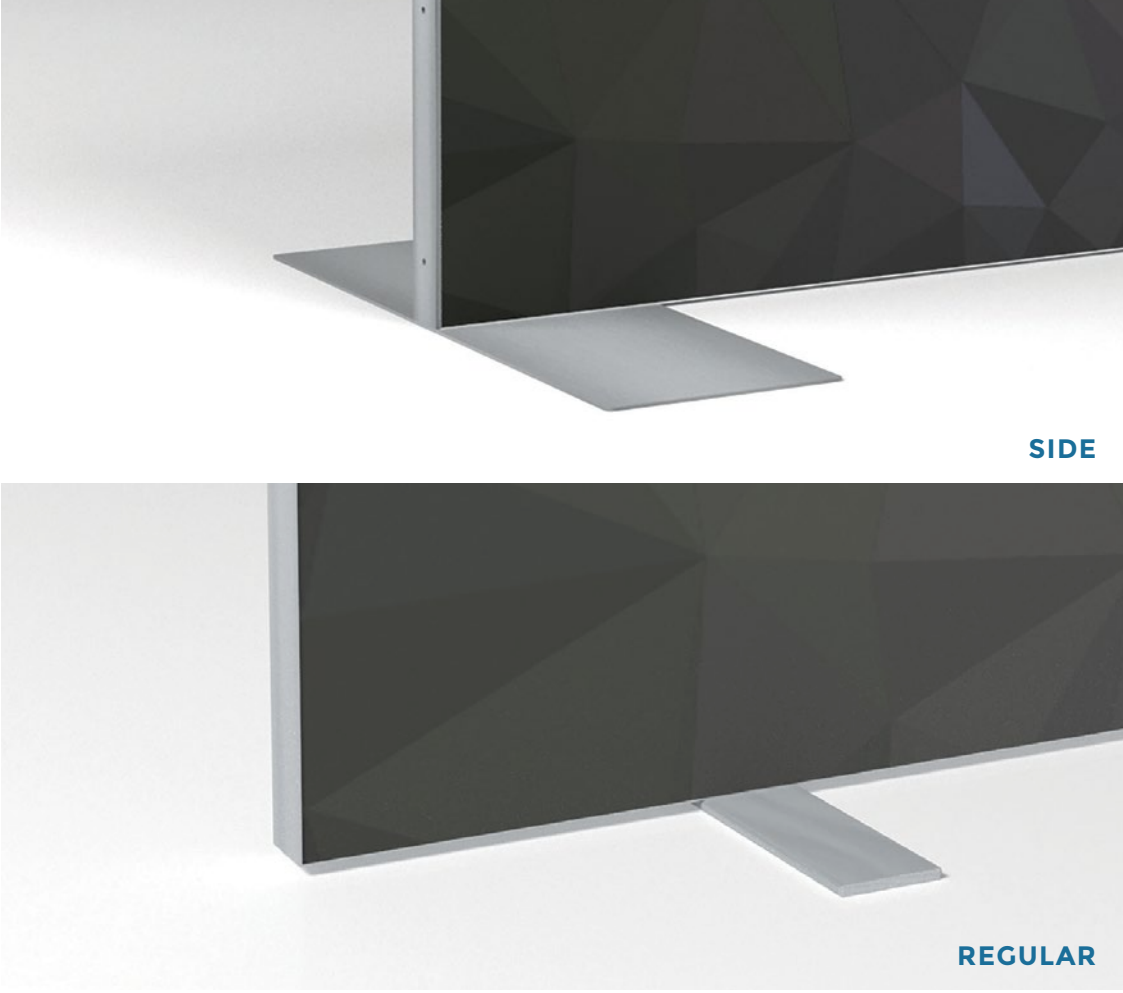
## 7 HANGING OPTIONS

TEXTILE FRAMES / DOUBLE-SIDED / **2 MOUNTING OPTIONS**





UNIQUE



SIDE

REGULAR

## 2 FREESTANDING OPTIONS





RiFRA  
Kitchens and Baths direct from Milano







# LED FRAMES



A LED frame is a textile frame with LED lighting. A LED frame gives a room more dimension, more atmosphere and a modern look. The frame is available in any size because various LED technologies have been developed.

## LED TECHNIQUES

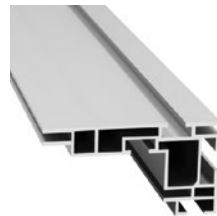
### SINGLE-SIDED



**AFL 50**  
LED on Dibond



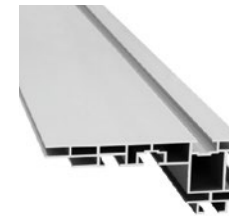
**AFL 60**  
LED on Dibond



**AFL 90 OPEN**  
Edge-lit



**AFL 90 CLOSED**  
Edge-lit



**AFL 120 OPEN**  
Edge-lit or stabilizer



**AFL 120 CLOSED**  
Edge-lit or stabilizer

### DOUBLE-SIDED



**AFL D100 OPEN**  
Edge-lit



**AFL D100 CLOSED**  
Edge-lit



**AFL D120 CLOSED**  
Edge-lit



**AFL D160 CLOSED**  
Edge-lit



**AFL D200 CLOSED**  
Edge-lit or stabilizer

# THE SPECIALIST IN **LED FRAMES**

Due to years of experience, we use various LED techniques with custom-made solutions and a fast delivery.



**3 YEARS WARRANTY**



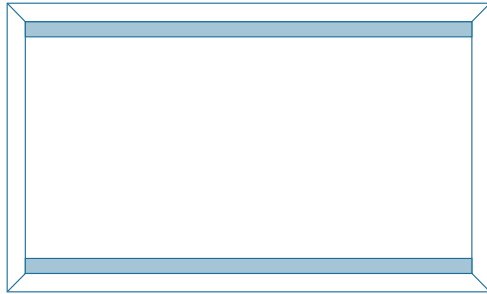
**CE-MARKING**



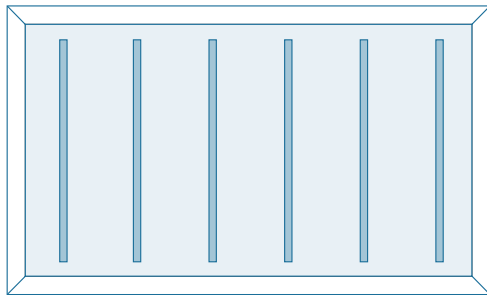
**CUSTOM MADE**



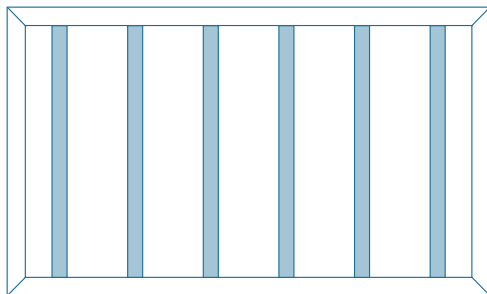
## EDGE-LIT



## LED ON DIBOND



## LED ON STABILIZER



# LED FRAMES

## LED TECHNIQUES / EDGE-LIT



### EDGE-LIT LED TECHNOLOGY

Edge-lit is pre-assembled and illuminates the textile print from the sides.



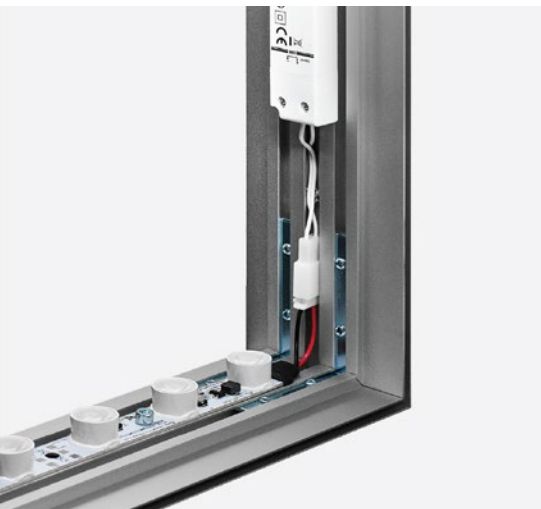
### OPTIONAL: BLOCKOUT FABRIC

Thanks to the use of a flexible reflective blockout fabric, there is a better light distribution.



### COMPACT TO TRANSPORT

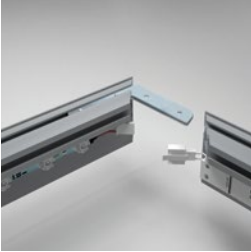
Thanks to the modular construction, the frames are compactly packed for transport.



Official licence

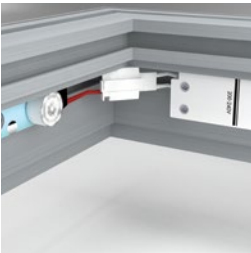
**PHILIPS**





### 1. CONNECT THE CORNERS

Put the two different locksets together. Install the locksets in the appropriate groove and attach the miter cut lengths together.



### 2. CONNECT THE PLUGS

Put the pre-assembled LED-strips and drivers together.



### 3. PLACE BLOCKOUT FABRIC - *OPTIONAL*

Attach the blackout fabric into the inner groove. This fabric blocks the lights, so the textile prints is more visible.



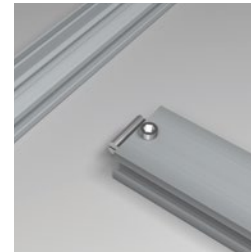
### 4. PLACE THE FRAME

Attach the frame by drilling it to the wall or install wall mounts. Let the wall mount support the frame. Suspension from the ceiling is also an option.



### 5. ATTACH THE TEXTILE PRINT

First attach the silicone edge in the corners of the groove. Then press the print into the rest of the groove from the middle.



### STRENGTHEN FRAME - *OPTIONAL*

To ensure stability of large sizes aluminum frames, stabilizers are mounted inside the frame to act like internal support beams.



# LED FRAMES

## LED TECHNIQUES / LED ON DIBOND



### LED MOUNTED ON DIBOND

The LEDs are pre-mounted on a dibond plate, whereby the textile print is illuminated from the rear.



### PERFECT LIGHT DISTRIBUTION

The wide angle lenses guarantee and even light distribution.



### POSSIBLE TO DIM

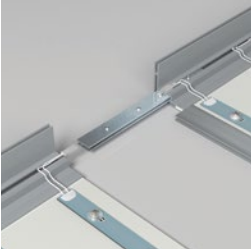
With the pre-installed dimmer it is possible to control the brightness by using a remote control.



### DALI READY

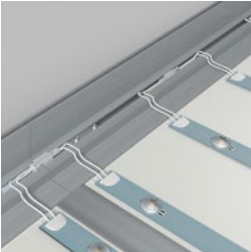
It is an option to make this LED frame compatible with DALI systems.





### 1. CONNECT THE PARTS

Place the extensionset in the designated groove and attach the dibond connector. Slide the parts together to connect the frame.



### 2. CONNECT THE PLUGS

Put the pre-assembled LED-strips and drivers together.



### 3. PLACE THE FRAME

Attach the frame to the wall by drilling through the dibond plate.



### 4. ATTACH THE TEXTILE PRINT

First attach the silicone edge in the corners of the groove. Then press the print into the rest of the groove from the middle.

# LED FRAMES

## LED TECHNIQUES / LED ON STABILIZER



### LED MOUNTED ON STABILIZER

This technique illuminates textile prints from the rear with LED mounted on stabilizers.



### SUITABLE FOR LARGE FRAMES

LED on stabilizer is recommended for large sizes to ensure an even light distribution.



### MODULAIR

Modular construction where LEDs are pre-assembled.

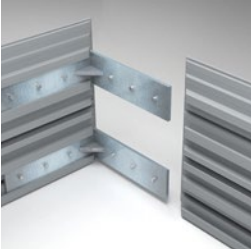


### POSSIBLE TO DIM

With the pre-installed dimmer it is possible to control the light distribution by using a remote control.

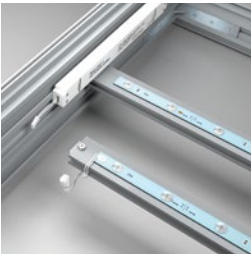






### 1. CONNECT THE CORNERS

Put the two different locksets together. Install the locksets in the appropriate groove and attach the miter cut lengths together.



### 2. INSTALL THE STABILIZERS

Place the stabilizers, with LED, at the indicated positions.



### 3. CONNECT THE PLUGS

Put the pre-assembled LED-strips and drivers together.



### 4. PLACE THE FRAME

Attach the frame by using wall mounts. Or place the frame freestanding or hanging with the appropriate installation options.



### 5. ATTACH THE TEXTILE PRINT

First attach the silicone edge in the corners of the groove. Then press the print into the rest of the groove from the middle.

# LED FRAMES

## SINGLE-SIDED

## MOUNTING

Single-sided LED frames are suitable for wall mounting. The frames are often used as striking signage in retail and public spaces. Change the textile print and easily create a new expression.





**WALL MOUNTING**



**DRILL DIBOND**



**DRILL FRAME**

## WALLMOUNTING LED FRAMES

The LED frames could be mounted on the wall for a single-sided, illuminated advertisement. We offer a suitable solution for each LED technology.

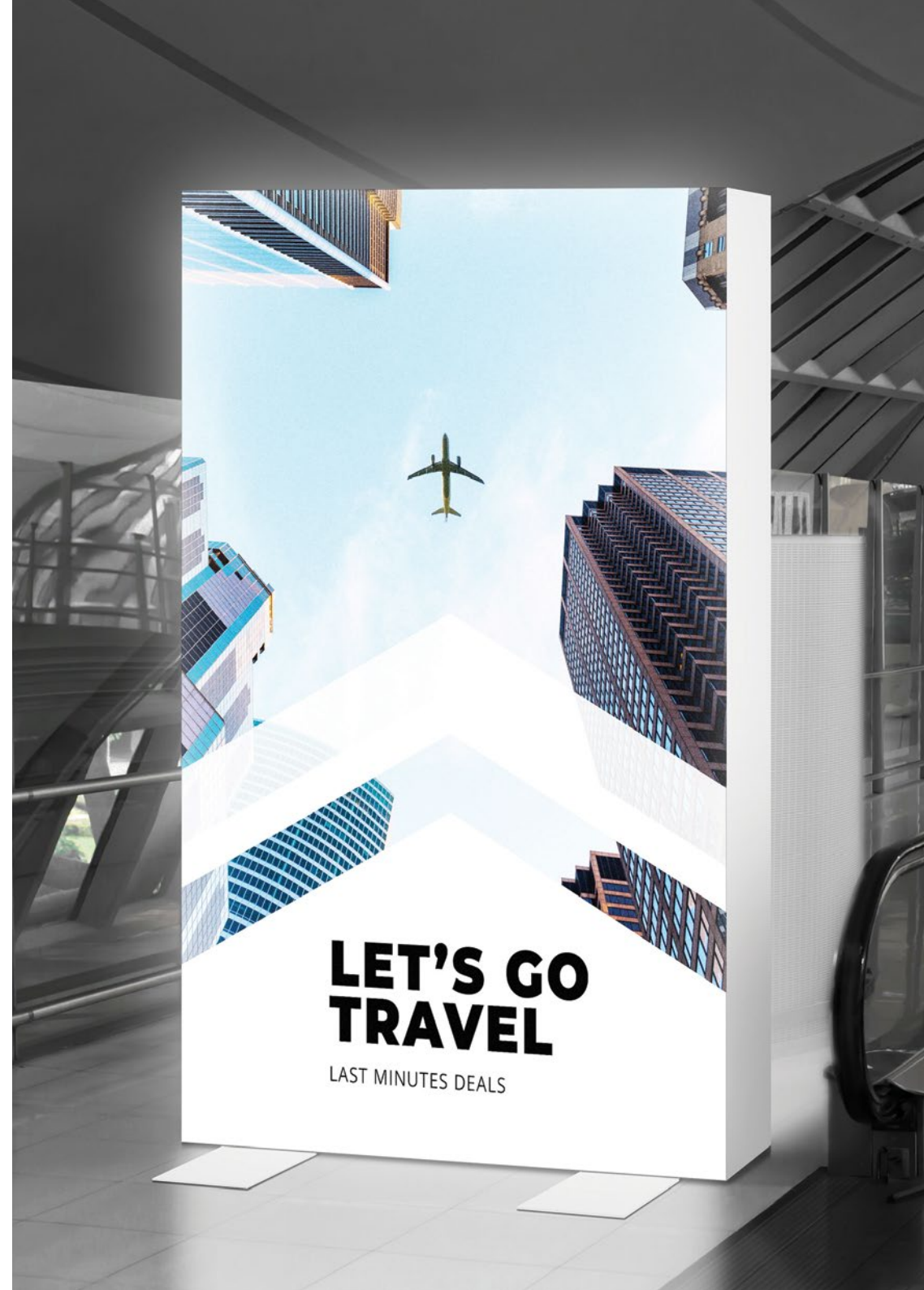


# LED FRAMES

## DOUBLE-SIDED

## MOUNTING

Our double-sided light boxes are easy to assemble. Make a striking visual display in shops, in showrooms or during exhibitions. The light box ensures that a message is clearly visible night and day. The frame could be provided with two textile prints.

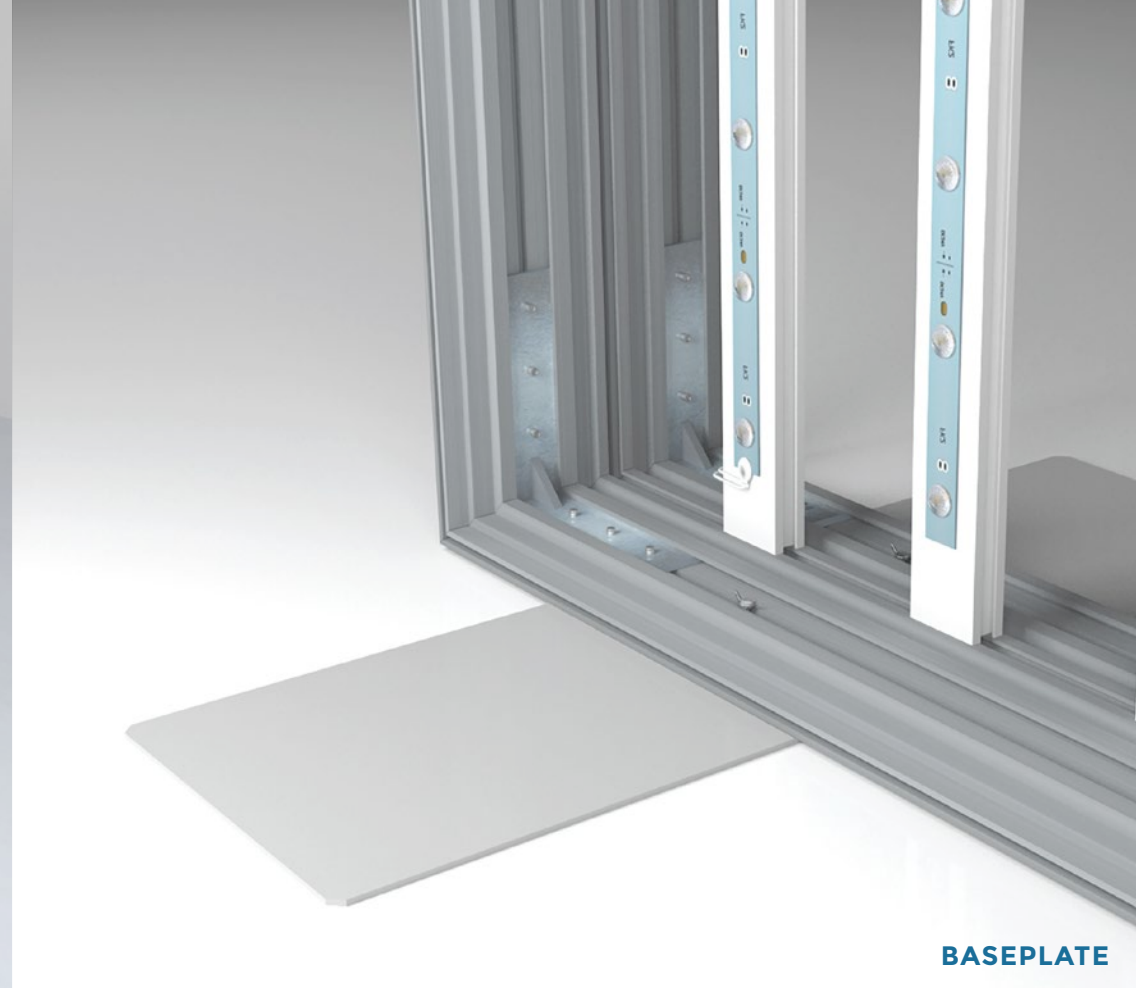




**CEILING MOUNTS**

## HANGING

Create eye-catching hanging LED illuminated banners and displays that are perfect in any showroom or above any exhibition stand by using ceiling mounts.



**BASEPLATE**

## FREESTANDING

Make eye-catching displays, standing banners or exhibition walls with the baseplates. The baseplate acts as a footrest under the aluminum LED frames.



**70's 80's DISCO**  
Tous les vendredis et samedis

**purple lounge**  
food and music

**MENU**  
À PARTIR DE  
**13€**

Suivez-nous ! Toute notre actualité sur Facebook  
[www.facebook.com/Casino 2000 Mondorf-les-Bains](http://www.facebook.com/Casino2000Mondorf-les-Bains)

[www.casino2000.lu](http://www.casino2000.lu)



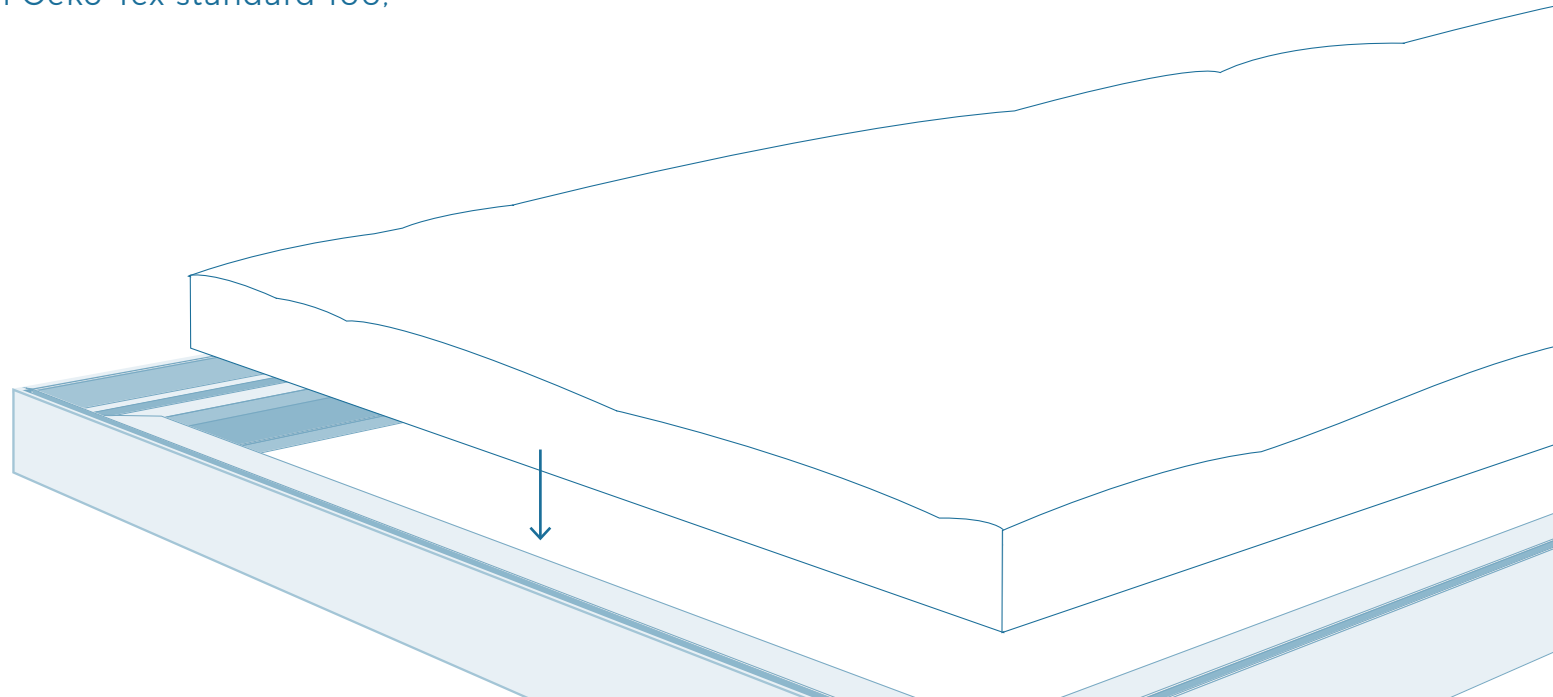
KEEP  
OUR  
SKY  
CLEAR



# SOUNDPROOF MATERIAL

## **THERM ACOUSTIC**

Therm Acoustic is made of polyester fibers (PET bottles) of which 60% comes from recycling. It does not contain any toxic substance. Tested in accordance with Oeko-Tex standard 100, report no. 94.0.0541.





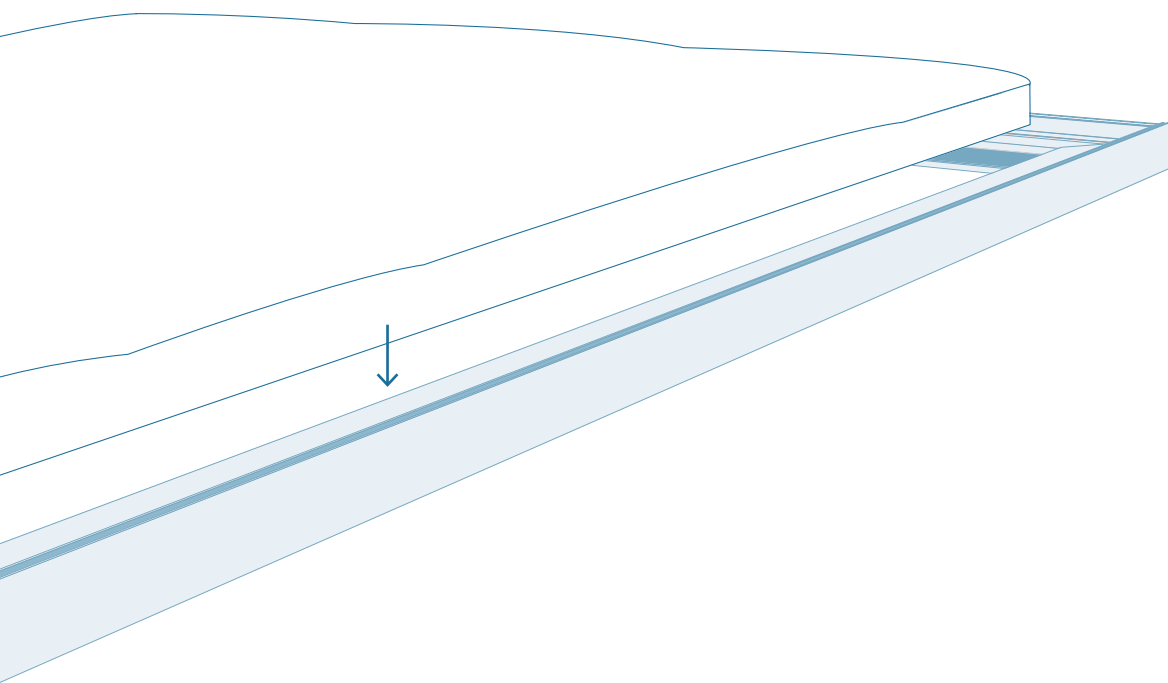
### THERM ACOUSTIC D20/25

Excellent absorption  
 NRC = 0,45;  $\alpha$  = 0,45  
 Density: 20 kg/m<sup>3</sup>  
 Thickness: 25 mm



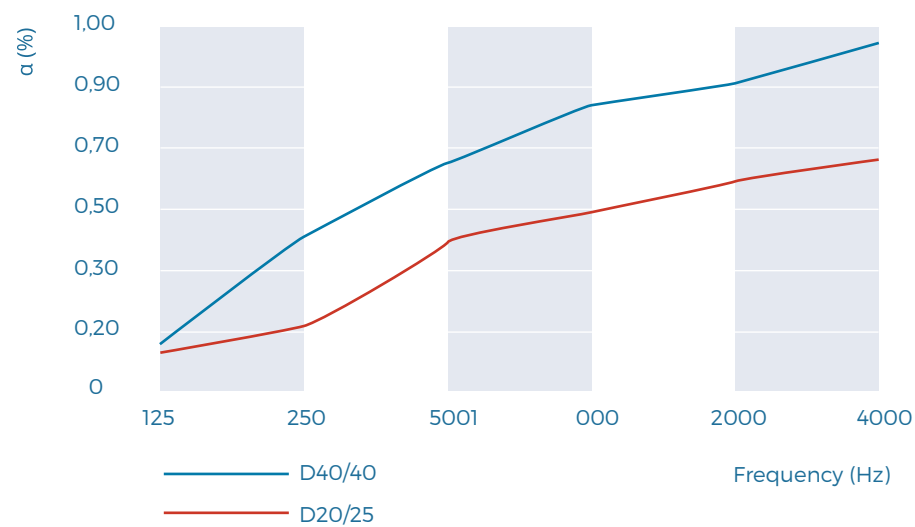
### THERM ACOUSTIC D40/40

Best absorption  
 NRC = 0,75;  $\alpha$  = 0,70  
 Density: 40 kg/m<sup>3</sup>  
 Thickness: 40 mm



### ABSORPTION VALUES

With two different types of sound-absorbing material, there is always a suitable solution to reduce the sound. See the table below for the results.



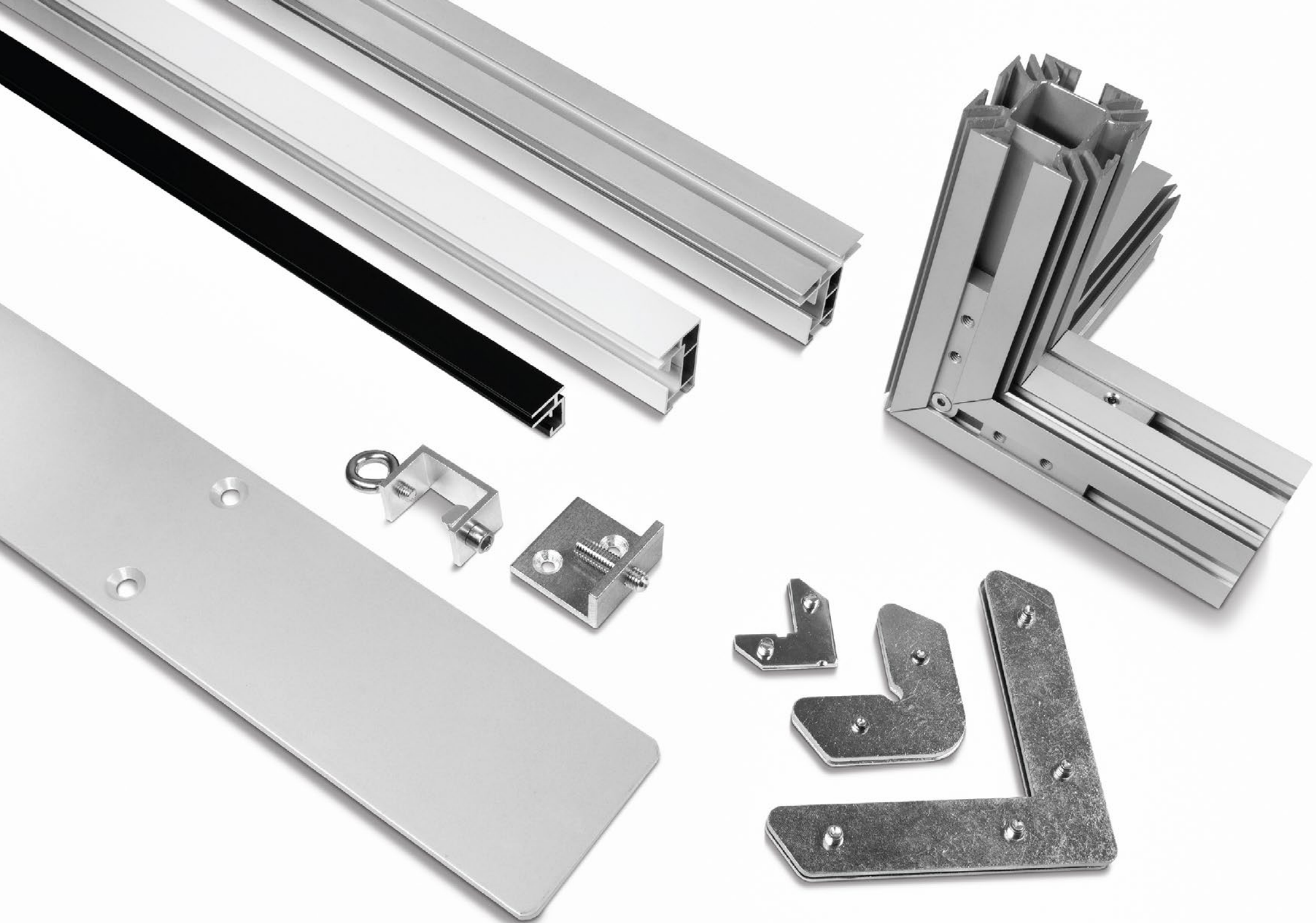
















## DYE-SUBLIMATION MADE IN LUXEMBOURG

Printed in dye-sublimation with water-based ink, our black back fabric offers great color reproduction combined with an opaque layer. Our fabric can be placed in front of a light source without any shadow.

Our local "Made in Luxembourg" production ensures the best quality and efficiency you can rely on.

## SEG : 100% INNOVATIVE

Our printed graphics can be folded to save space during transport and the Silicon Edge offers a quick and easy way to change your message.

One aluminium frame can be used with different messages depending on your needs. Updates are not a problem anymore, since graphics can be efficiently sent by post in a simple envelope



DECORATION  
LARGE FORMAT PRINTING  
EXHIBITION STAND  
SIGNAGE  
CUSTOM SOLUTIONS



**LuxVisual**

3, rue Emile Bian - L-1235 Luxembourg | +352 26 25 38-1 | [info@luxvisual.lu](mailto:info@luxvisual.lu)

[www.luxvisual.lu](http://www.luxvisual.lu)